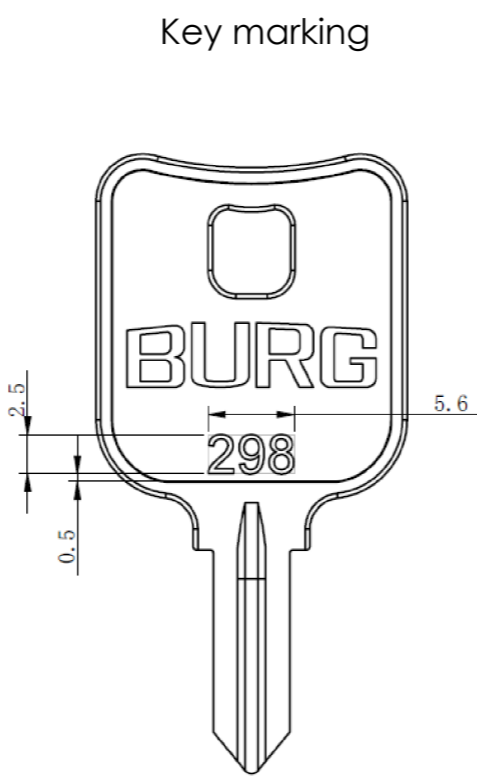
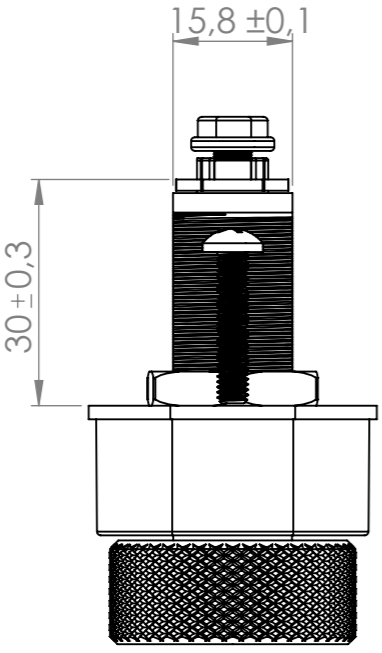
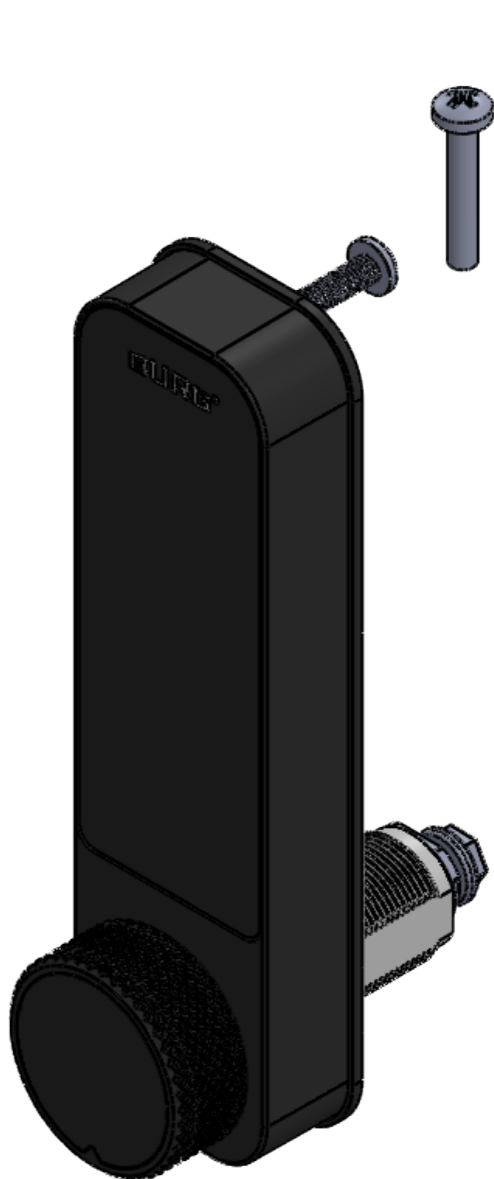
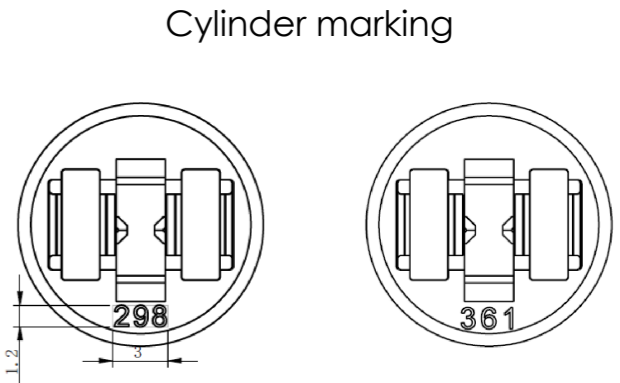
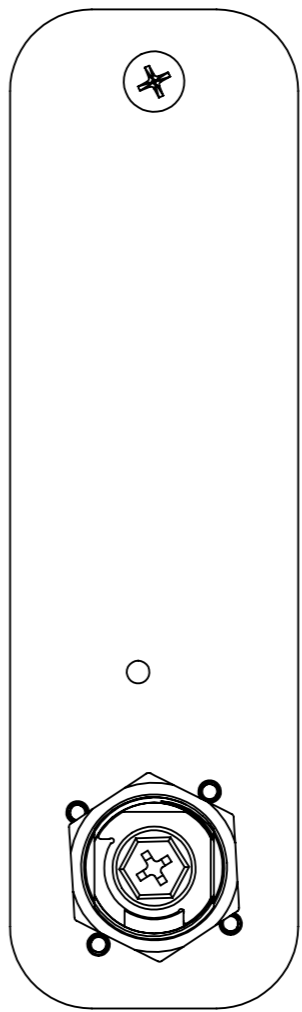
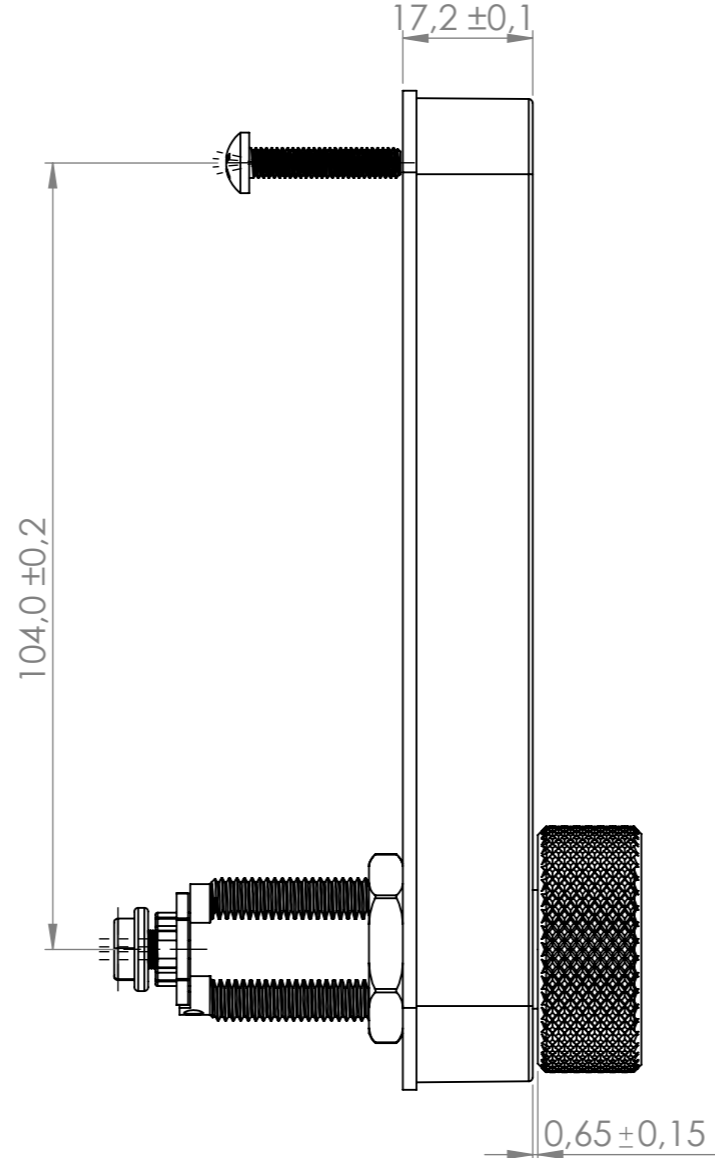
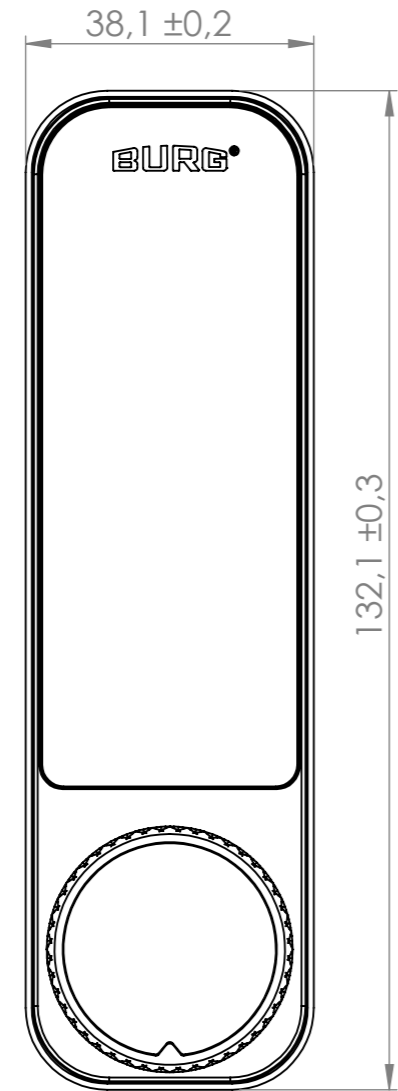
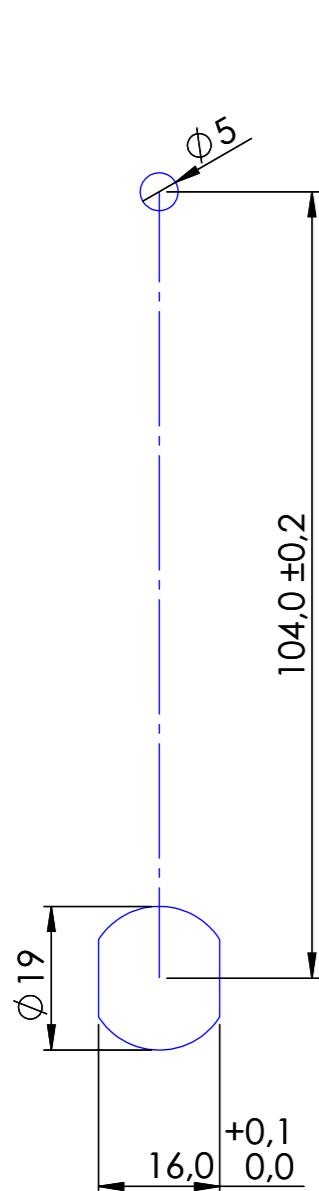


Ohne die vorherige Genehmigung von BURG Lüding GmbH & Co. KG darf diese Zeichnung weder vervielfältigt, noch Dritten zugänglich gemacht werden.

All rights in this drawing are the property of BURG Lüding GmbH & Co. KG. No copies of the drawing nor use of it shall be made without the express approval of BURG Lüding GmbH & Co. KG.

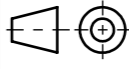


Key marking

Drawing No. ext: E.11058.01.101.00
Rev.: 1

ISO 2768-1 nominal lengths in mm Nennmaßbereich in mm	Tolerance class/Toleranzklassen	
	f	m
> 0,5 - 3	±0,05	±0,10
> 3 - 6	±0,05	±0,10
> 6 - 30	±0,10	±0,20
> 30 - 120	±0,15	±0,30
> 120 - 400	±0,20	±0,50

General tolerance
Allgemeintoleranzen
ISO 2768-m



Scale/Maßstab: 1:1 Weight/Gewicht: g

Material/Werkstoff:
Finish/Oberfläche: -

date	name
05.08.2024	MLE
05.08.2024	MOL

Description/Benennung
Niro.RFID
Niro.RFID

rev	Change/Änderung	date	name
03	Cylinder Key marking	26.09.24	MLE
02	Gap size changed	06.09.24	MLE

3D-modell : Z00E5694_00178606

Drawing No/Zeichnungsnummer
Z00E5694

A3
sheet 1 of 1

Repl. for/Ersetzt für: Repl. by/Ersetzt durch: